

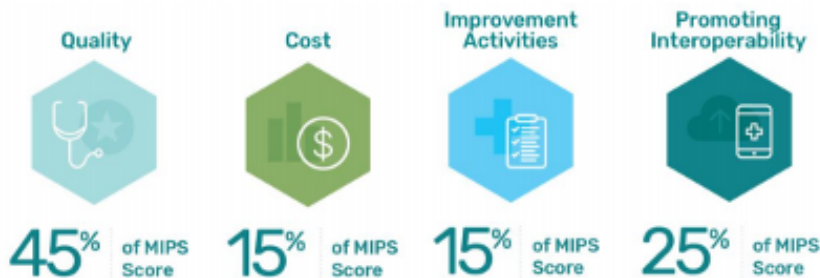
The data submission deadline for Medicare Incentive Programs MIPS **03/31/2020!**

How will the failure-to-report penalty affect your practice?

How is your incentive or penalty calculated?

- ★ **GOTO : <https://qpp.cms.gov/login>**
Eligible providers are evaluated in four dimensions:

MIPS performance category weights in 2019:



Each dimension is assessed according to a points system, according to national guidelines and practice-specific metrics.

What does this mean for you?

- ★ Medicare uses the data you submit to assign a percentage score to each of the dimensions. Some of these data, such as your Medicare claims, go directly through the CMS system without any further action from you. But others, especially the Promoting Interoperability category, require your practice to self-report using certified EHR technology. And if your reporting is late or incomplete, you could pay a hefty price.

Where BIL Force comes in

The Promoting Interoperability performance metrics include tasks that may not be easy for a busy practice to accomplish, from protecting electronic patient data (an IT security issue) to encouraging enrollment in patient-facing portal systems (an outreach issue). You may not even know how to access these features in your EHR system.

But at **BIL-Force**, we have the experience you need to make navigating these complex issues simple. *We can help you:*

- ★ Set up a certified EHR system, or upgrade/further integrate one already in use.
- ★ Improve IT security to shield your patients' sensitive data.
- ★ Drive patient engagement in online systems through front-desk personnel training.
- ★ Support your health information workflow.

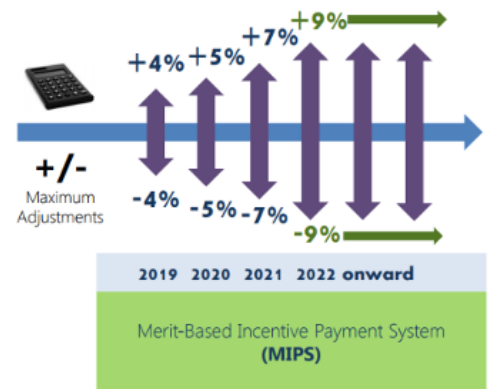
Let us help you maximize your earning potential with Medicare and Medicaid, and avoid costly errors.

You can regain control of your revenue cycle. **BIL-Force makes it easy.**

We hit the ground running. So, we're ready when you need us—for one day, or one year—or anytime at all. Thank you for taking a moment to consider our service. We'd welcome the opportunity to speak with you.

Incentive Programs:

- ★ The Medicare Merit-based Incentive Payment System (MIPS) is intended to encourage the adoption, implementation, and meaningful use of certified EHR technology.
- ★ You most likely know that this includes higher payments for practices that follow the programs' guidelines. But there is also a penalty for failing to report your usage data. For 2019, the penalty can already be as high as 7% of your revenue and by 2022, it's set to increase to 9%.



Contact Us:

3742 W. Irving Park Road
Chicago, IL 60618
Phone: 312.421.1177
Fax: 312.277.2302
Email: www.BIL-Force.com
Site: Info@BIL-Force.com